

VA ROUTE 662

PARCEL 1B
TM 5-1-16G
28.7957 AC.

- NOTES:
1. THE BOUNDARIES SHOWN HEREON ARE BASED ON SURVEYS OF RECORD.
 2. THIS PLAT IS A COMPOSITE SKETCH OF THE PARCELS AND NO FIELD WORK WAS PERFORMED.
 3. AERIAL PHOTOGRAPHY IS FROM THE USGS AERIALS FLINT HILL QUADSHEET NW AND SW.

U. S. ROUTE 522

GORDAN CLAN LANE

PARCEL 1B1
TM 5-1-16H
24.8464 AC.

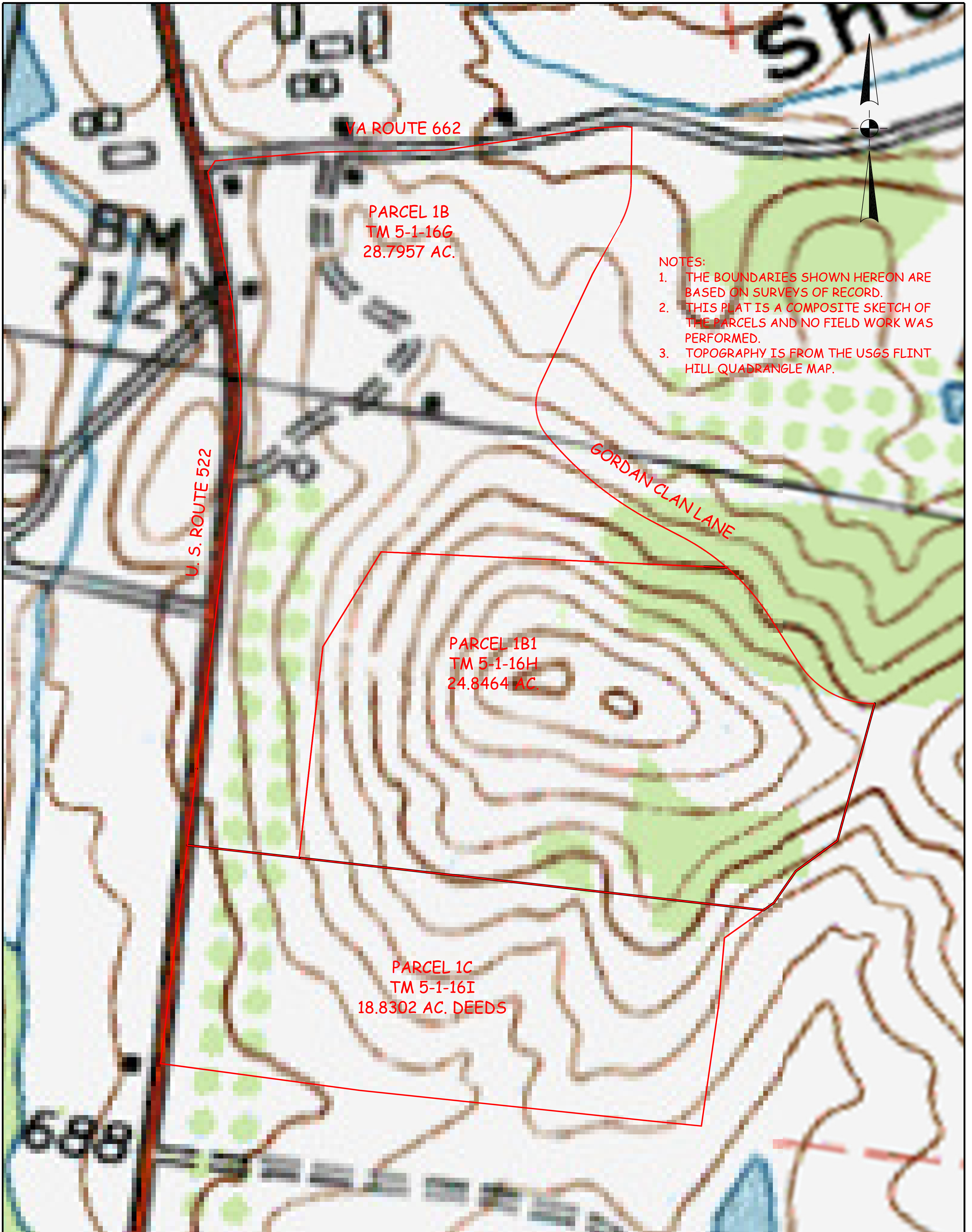
PARCEL 1C
TM 5-1-16I
18.8302 AC. DEEDS

PROJ. NO.: 14-
SHEET 1 OF 1
SCALE: 1" = 150'

DATE: APRIL 18, 2014
REV 1:
REV 2:
REV 3:
REV 4:

CLARK LAND SURVEYING
LAND PLANNERS AND SURVEYORS P.C.
P.O. BOX 478; FLINT HILL, VA 22627
(540)635-2328

AERIAL OVERLAY
REKOW PROPERTIES
WAKEFIELD DISTRICT, RAPPAHANNOCK COUNTY, VIRGINIA



VA ROUTE 662

PARCEL 1B
TM 5-1-16G
28.7957 AC.

NOTES:

1. THE BOUNDARIES SHOWN HEREON ARE BASED ON SURVEYS OF RECORD.
2. THIS PLAT IS A COMPOSITE SKETCH OF THE PARCELS AND NO FIELD WORK WAS PERFORMED.
3. TOPOGRAPHY IS FROM THE USGS FLINT HILL QUADRANGLE MAP.

U. S. ROUTE 522

GORDAN CLAN LANE

PARCEL 1B1
TM 5-1-16H
24.8464 AC.

PARCEL 1C
TM 5-1-16I
18.8302 AC. DEEDS

PROJ. NO.: 14-
SHEET 1 OF 1
SCALE: 1" = 150'

DATE: APRIL 18, 2014
REV 1:
REV 2:
REV 3:
REV 4:

CLARK LAND SURVEYING
LAND PLANNERS AND SURVEYORS P.C.
P.O. BOX 478; FLINT HILL, VA 22627
(540)635-2328

TOPOGRAPHIC OVERLAY
REKOW PROPERTIES
WAKEFIELD DISTRICT, RAPPAHANNOCK COUNTY, VIRGINIA