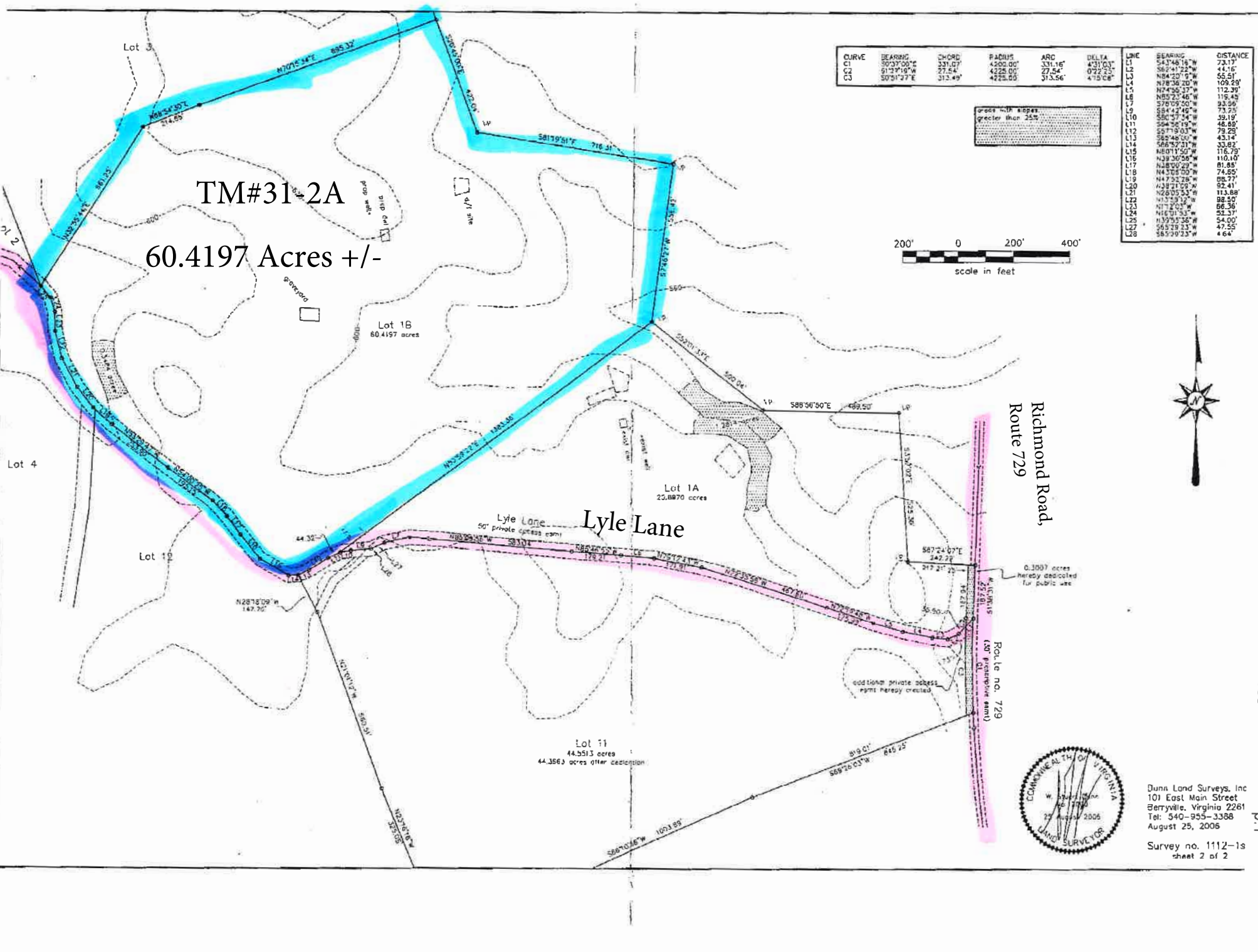


CURVE	BEARING	CHORD	RADIUS	ARC	DELTA	LINE	BEARING	DISTANCE
C1	303°30'00"E	331.67'	4200.00'	331.16'	4°31'03"	L1	S43°48'18"W	73.17'
C2	91°39'19"W	27.64'	4228.00'	27.54'	0°22'23"	L2	S62°41'22"W	44.16'
C3	50°31'27"E	313.49'	4228.00'	313.56'	4°15'08"	L3	N84°20'07"W	65.51'
						L4	N98°58'20"W	109.29'
						L5	N74°56'37"W	112.39'
						L6	N53°23'46"W	119.49'
						L7	S70°09'00"W	23.96'
						L8	S84°42'40"W	73.25'
						L9	S80°37'34"W	39.19'
						L10	S84°36'15"W	46.85'
						L11	S5°13'03"W	79.25'
						L12	S82°48'00"W	43.14'
						L13	S48°57'31"W	33.84'
						L14	S68°01'50"W	116.79'
						L15	N39°30'58"W	110.10'
						L16	N48°00'00"W	81.85'
						L17	N43°05'00"W	74.65'
						L18	N47°32'28"W	88.77'
						L19	N39°10'00"W	52.41'
						L20	N28°05'53"W	113.88'
						L21	N13°09'12"W	88.50'
						L22	N12°10'00"W	86.36'
						L23	N4°01'51"W	34.37'
						L24	N39°53'36"W	54.00'
						L25	S65°28'23"W	47.55'
						L26	S65°09'23"W	6.64'

cross with slopes
greater than 25%



TM#31-2A
60.4197 Acres +/-



Dunn Land Surveys, Inc
101 East Main Street
Berryville, Virginia 22611
Tel: 540-955-3388
August 25, 2006

Survey no. 1112-18
sheet 2 of 2