

# Exhibit Plat Camp Meadowlark

Scale 1" = 200'  
Sheet 1 of 3

PROJECT No. 2794

DATE JULY 23, 1968

KEYSER  
20 LINES BASED ON ANGLE FROM CENTER OF ROAD

TRACT 5-A 1.7109 ACRES

RAIL FENCE  
End of  
STONE FENCE

RUSH RIVER  
MILLER

MILLER



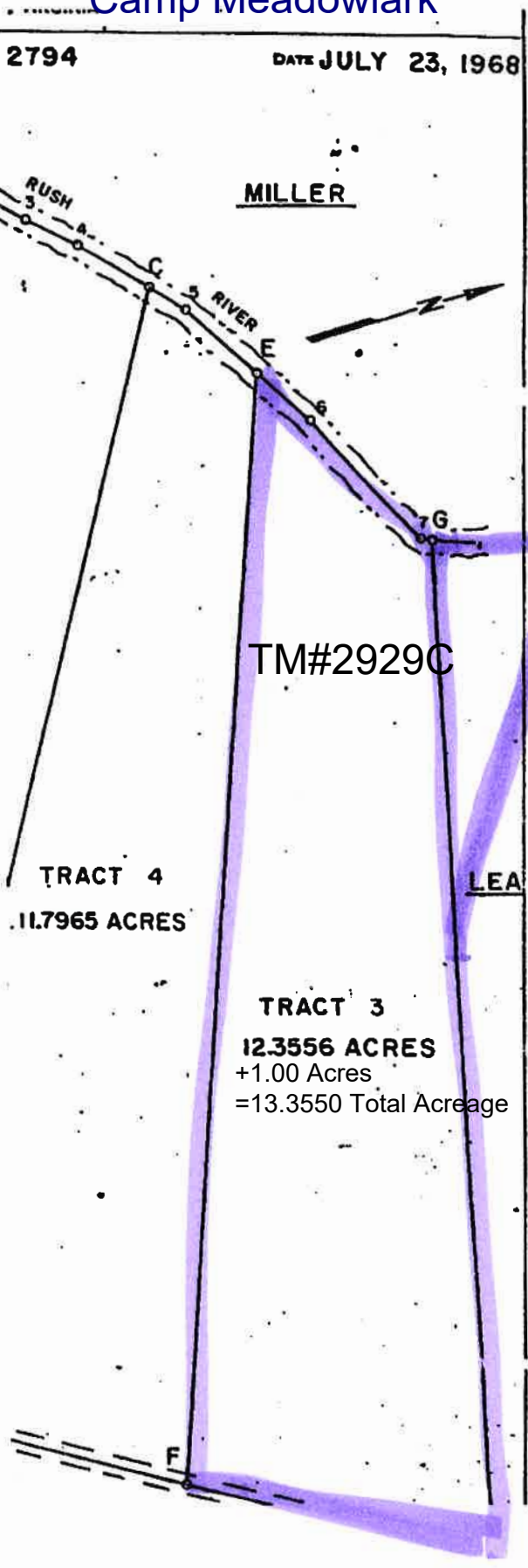
beginning at (F), a point in the center of Virginia Route 626 and corner to Tract (4), said point (F) is referenced by an iron pipe set 15.26 feet from (F) in the line (E), thence with Tract (4) N68°38'08"W passing through pipes set at 15.26 feet, 51 feet, 1166.70 feet, 1394.70 feet, and 1607.60 feet, 1632.60 feet in all to (E), a point in the center of Rush River, thence with the center of Rush River, the general courses of which are as follows: N59°33'47"E 100.58 feet to (6), thence N64°55'11"E 69 feet to (7), thence N19°51'41"E 12.73 feet to (G), a point corner to Lea, thence following the said river and with Lea S75°33'36"E passing through an iron pipe set at 25.00 feet, 1501.54 feet in all to (H), a point in the center of Virginia Route 626 referenced by an iron pipe set 15.73 feet from (H) in the line (H)-(G), thence with the center of Virginia Route 626 S31°56'24"W 452.00 feet to (F), the point of beginning, the said tract and containing 12.3556 Acres.

TRACT 4  
11.7965 ACRES

TM#2929C

TRACT 3  
12.3556 ACRES  
+1.00 Acres  
=13.3556 Total Acreage

LEA



**DRUMS FRUERY**  
HAMPTON DISTRICT, RAPPAHANNOCK CO., VA.

Date: MAY 15, 1990

**VH&D INC.**  
Land Planners & Surveyors  
WARRENTON, VIRGINIA 22186

Scale: 1" = 100'

Project No.: 319B

Sheet 1 of 2

